

Your Epic Journey

starts here.



Earlham College

What is the Epic Journey?

A 4-year journey through the liberal arts that combines excellent classroom experiences with transformative co-curricular experiential learning, to prepare students exceptionally well for life beyond Earlham. Below is a diagram to help illustrate some of the key components of the Epic Journey.

Student-shaped + Advisor/Mentor Guided



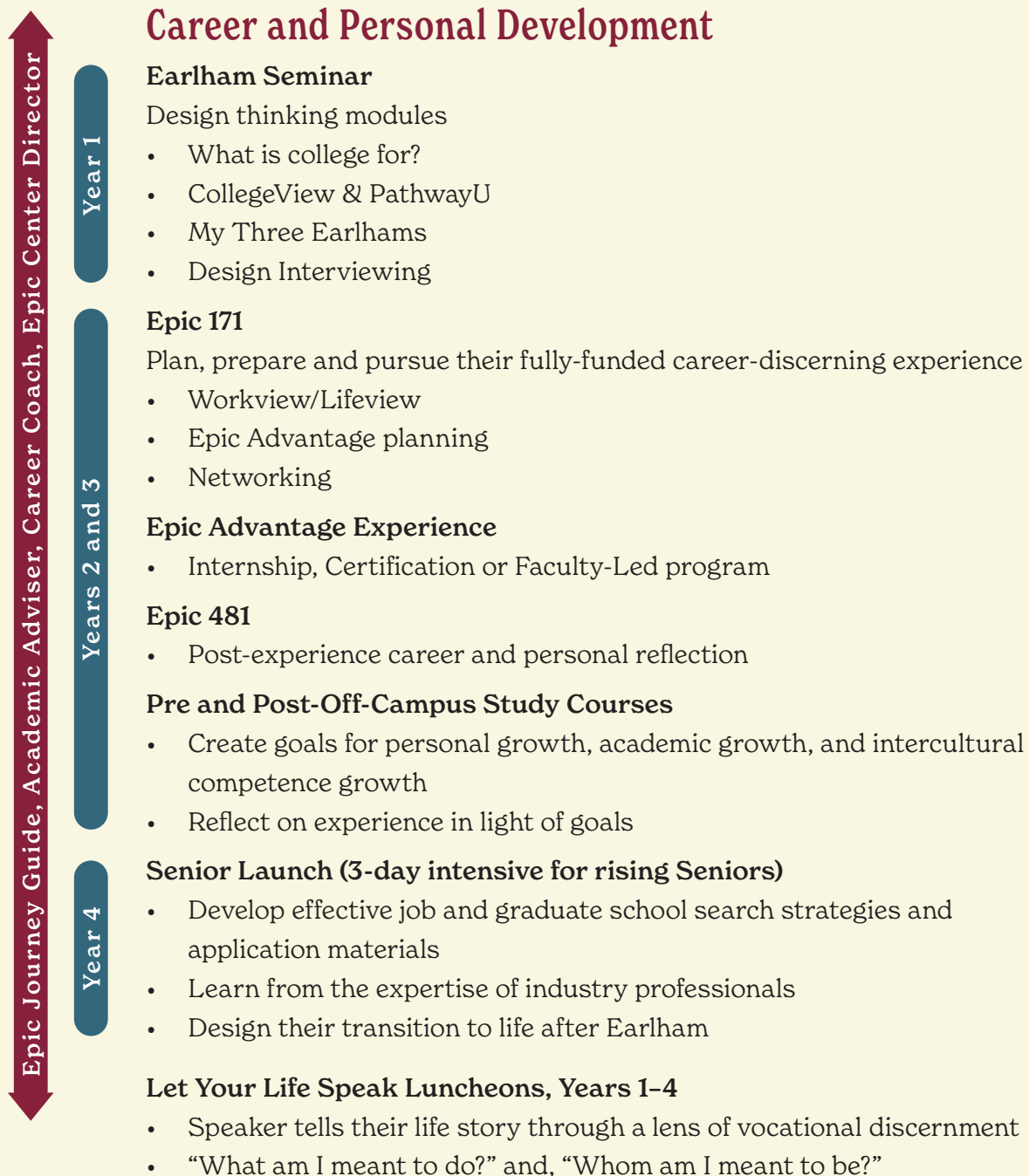
As shown in the diagram, one key feature is a Major in the Liberal Arts. This encompasses our history of excellence in the classroom both in the specific major courses as well as the breadth of courses that a student takes during their 4 years across the entire curriculum.

A second distinguishing feature is a guaranteed, fully-funded career discerning experience called the Epic Advantage that is embedded in a 4-year career discernment program.

For many of the components, experiences can be both curricular and co-curricular. For example, a student can have research experiences integrated as part of classes within their major or as a standalone research course, but also have the opportunity for paid research experience in the summer at Earlham College or other institutions. It is worth noting that Campus and Community Engagement encompasses athletics, student clubs, as well as on-campus employment.

Career and Personal Discernment

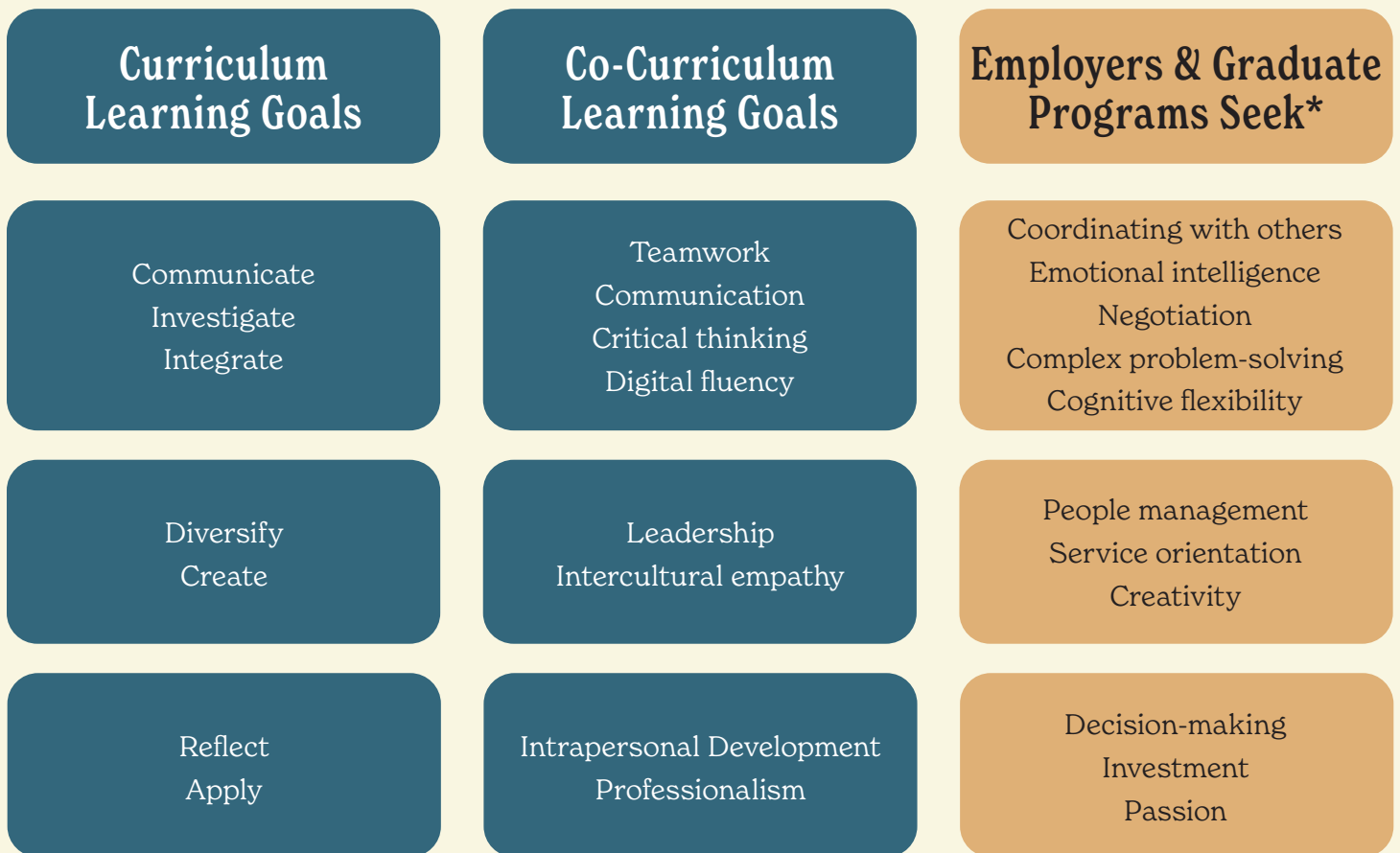
The Epic Journey includes an intentional 4-year career discernment and personal development program with an emphasis on discovery and reflection using a design thinking approach. This program takes a many-mentors model approach: Students have Academic Advisers, Epic Journey Guides, Career Coaches, Epic Center Directors and others to help guide their journey. Below is a diagram that shows the 4-year nature of this program.



This program was developed with the help of a NetVUE Vocations across the Academy Grant and by faculty who participated in the Stanford Life Design Studio.

Career-Ready Competencies

To assist students in their development, and to give them the language necessary to translate and articulate how their experiences align with the expectations of graduate schools, professional schools and employers, a set of career ready competencies were developed by the National Association of Colleges and Employers (NACE) career competencies. Student development of these competencies is tracked using the My Epic Journey portfolio system. A diagram below shows how the co-curricular career-ready competencies align with the College's curricular learning goals.



Equity and Inclusion are foundational skills built within each competency.

*Source: The Future of Jobs, World Economic Forum

Discover - Level 1

Demonstrates an awareness of skill and associated terminology. Able to execute skill when following prompts or instructions, typically during low-stake tasks.

Integrate - Level 2

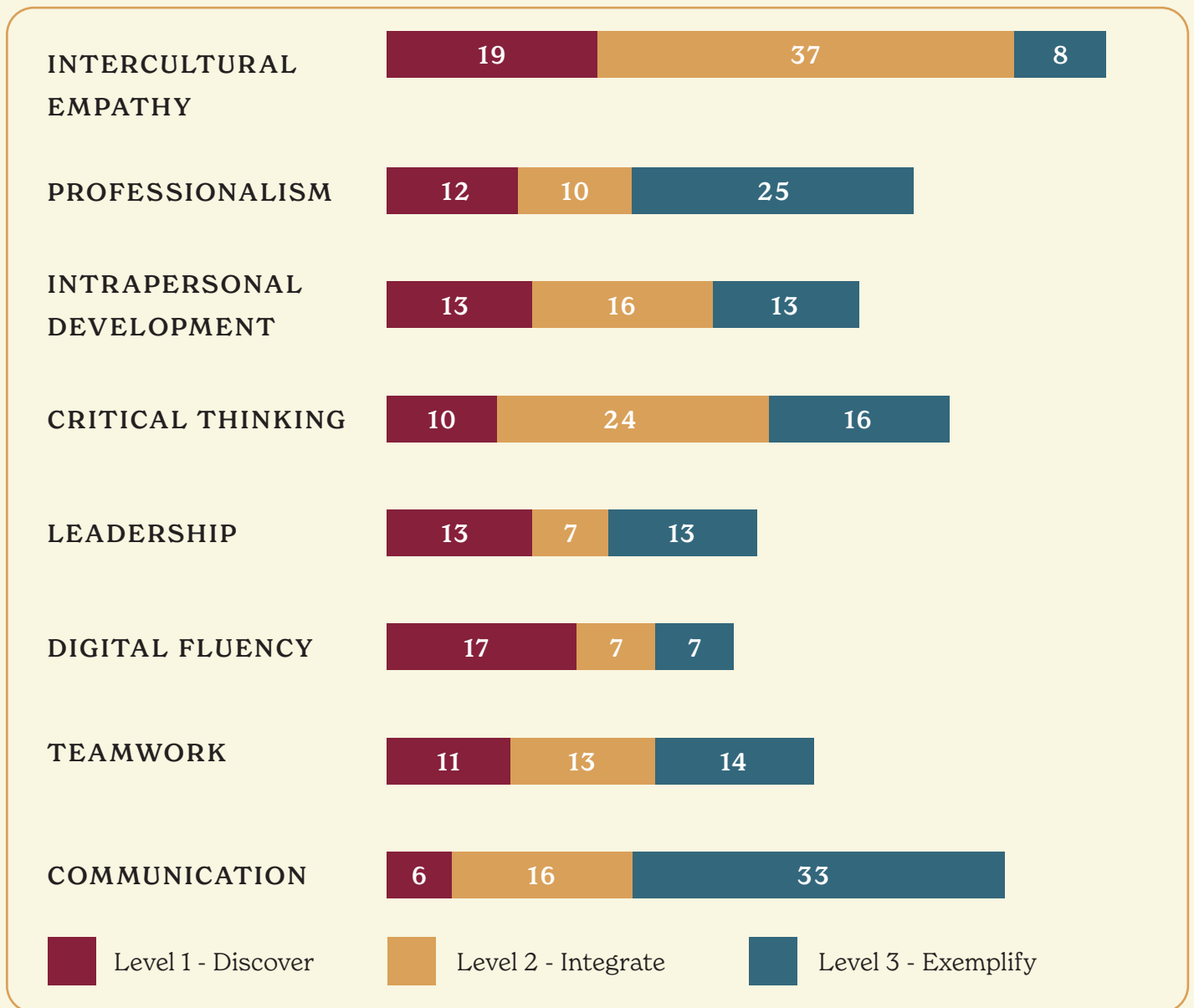
Executes skill appropriately given environment, audience and task. Able to perform skill mostly independent. Functionally proficient.

Exemplify - Level 3

Consistent application of skill independently and across multiple environments, likely to external audiences, and in complex tasks. Able to serve as a guide for others to grow in skill development.

Epic Centers and Programs

Co-curricular learning is greatly supported by the Epic Centers and Programs and the many opportunities they offer to students to develop the career-ready competencies.



Learn more about the opportunities, programs, and student clubs associated with the Epic Centers and Programs in the following pages.



Center for Career Education

Mission

Empowering students to imagine, design and pursue an Epic Journey that leads to a purposeful life and meaningful career.

Executive Director

Mila Cooper

coopemi@earlham.edu

(765) 983-1695

Landrum Bolling 109

Major Activities and Programs

4-YEAR FRAMEWORK FOR CAREER & PERSONAL DISCERNMENT

- Career Coaching
- Career Community Programming
- Senior Launch
- Let Your Life Speak Series

EXPERIENTIAL OPPORTUNITIES

- Epic Advantage (independent student experiences including internships, micro-internships, certifications, and coursework)
- Freeman Asia Internship Program
- Richmond Residency Program
- Peer Career Coach Program
- Student Scholarly Conference Travel Award

BUILDING CONNECTIONS

- Earlham Science Scholars
- Epic Expo (Fall & Spring)
- Classroom Visits
- Alumni-Student Social
- Research Mini-Conference

Student Clubs and Organizations

- Google Developers and Net Impact
- Black Student Union
- Peace & Advocacy Council
- Students for a Free Tibet
- Student Sustainability Corps



Office of Community Engagement

Director of Community Engagement **Mission**

Engagement

O'Jeanique Twyman

twymajo@earlham.edu

(765) 983-1573

Landrum Bolling 123

The Office of Community Engagement cultivates morally sensitive leaders committed to the pursuit of justice and the common good through co-curricular experiences, community engaged learning, and reciprocal partnerships in Richmond and beyond.

Major Activities and Programs

- Campus-wide service days
- 1:1 service opportunities
- Student leadership team
- Community Scholars Program
- Alternative Break Program
- Living-learning community
- Richmond Residency summer internship
- Community-engaged courses (Service-learning)

Campus Partnerships

The office is working on expanding our faculty relationships through partnering on community-engaged courses. We are in the process of providing resources and training to interested faculty members through a grant we received from the GLCA. We will also be working with our current community partners as well as the Wayne County Foundation.

Community Engagement

The office works with various community partners in a very practical way (providing student volunteers), but we are also working on other engagement opportunities such as addressing issues of food insecurity in the community.



Center for Entrepreneurship, Innovation and Creativity

Director

Gene Hambrick

hambrle@earlham.edu
(765) 983-1356

Landrum Bolling 109

Mission

The Center for Entrepreneurship, Innovation and Creativity helps students transform their passions, ideas and ideals into action through the lenses of ideation, design-thinking and social entrepreneurship. The Center supports Earlham's mission to change the world for good by encouraging ingenuity and preparing students for a rewarding and meaningful career.

Major Activities and Programs

- Hult Prize Competition
- Earlham Prize for Creative Capitalism: The Business Plan Competition for Social Entrepreneurship
- Earlham Epic Grand Challenge
- Dimick Eastman Grand Challenge
- Earlham-Levinson Entrepreneurial Bootcamp
- 3-Day Startup
- John R. Lewis Case Competition
- Harvard Case Competition

Student Clubs and Organizations

- EC Ethical Debate Club
- Brimley's A'Capella Intercollegiate Team
- Net Impact Chapter of Earlham
- EC Robotics Club (Pending)
- EC Esports Club
- EC Esports Intercollegiate Team (Pending)





Center for Environmental Leadership

Mission

The Center for Environmental Leadership seeks to engage a diverse set of students in projects and programs exploring the interconnectedness of social and environmental systems, and to empower students to take leadership roles in developing creative and just solutions to problems within these systems in their future careers and communities.

Major Activities and Programs

OUTDOOR EDUCATION

- August Wilderness
- Athletic, Wellness, and Physical Education courses
- Solomon Indoor Climbing Wall
- Outdoor activities
- Wilderness First Responder Courses

MILLER FARM

- Sustainable Agriculture Courses
- Production Garden
- Community Garden

CAMPUS SUSTAINABILITY

- Student Sustainability Corps
 - Waste minimization efforts, like composting and the Free Store
 - Outreach, education, and data management
- Sustainability Living Learning Community
- Climate Action Planning

HEART MARKET, AN ON-CAMPUS FARMERS/ARTISAN MARKET

Student Clubs and Organizations

- Outdoors Club
- In discussion: Pepper Club and Ag Club

Director

Jamey Pavey

paveyja@earlham.edu
(765) 983-1436
Dennis Hall 204

Director of Outdoor Education

Kim Reid

reidki1@earlham.edu
(765) 983-1790
Dennis Hall 212

Miller Farm Manager

Lucy Enge

engelu@earlham.edu
765-973-2121
Dennis Hall 212





Center for Global Health

Mission

Students who engage with the Center for Global Health are challenged to explore 21st-century global health issues using both interdisciplinary and disciplinary knowledge and perspectives. Expert career mentoring, internships and externships, research opportunities, and volunteer service—in Richmond, Indiana, or halfway around the world—are invaluable ways the CGH helps prepare students for leadership in their chosen health fields.

Director

Peter Blair

blairpe@earlham.edu
(765) 983-1517
Stanley Hall 141

Major Activities and Programs

- Health Externship
- Community Medicine
- Global Health Epic Advantage Program
- Intercultural Competence May Term
- CGH Sponsored Research
- Public Health minor
- Medical Humanities applied minor
- MCAT Prep Course

Student Clubs and Organizations

- Health Club
- HOSA
- MAPS





Convener

Mila Cooper

coopemi@earlham.edu

(765) 983-1695

Landrum Bolling 109

Center for Social Justice

Mission

The Center for Social Justice (CSJ) embodies one of the enduring elements of Earlham's history and purpose: linking our passions for social justice to deep learning, engagement and purposeful futures. The CSJ helps equip students for lifelong engagement on social justice issues through initiatives that build skills and knowledge across the disciplines in and out of the classroom.

Major Activities and Programs

- CSJ Forums, where untenured faculty from historically vulnerable groups share their research with the campus
- Student Corps (5-6 students)
- Survive & Thrive Lunches
- Latinx Heritage Month, Black History Month, and Women's History Month
- Peace and Justice Week
- Spring Lobby Weekend (FCNL)

Student Clubs and Organizations

- Amnesty International
- Trans Student Union
- The Black Student Union
- I-20 (the International Student House)
- Interfaith House
- The Jewish Student Union
- The Muslim Students Association
- Pura Vida Latinx
- The South Asian Student Association
- Students for a Free Tibet
- Students for Peace and Justice in Palestine





Center for Global Education

Mission

The mission of the CGE is to empower students with a critically informed global consciousness through an array of on-campus and off-campus global learning opportunities. CGE helps students to become agents of sustainable and inclusive communities who are ready for lives of meaningful engagement in a globally interconnected world.

Executive Director

Roger Adkins

adkinro@earlham.edu

(765) 983-1890

Landrum Bolling 119

Director of International Student and Scholar Services

Candice Quiñones

quinoca@earlham.edu

(765) 983-1746

Landrum Bolling 121

Senior Director of Off-Campus Programs

Jennifer Lewis

quinoca@earlham.edu

(765) 983-1887

Landrum Bolling 128

Major Activities and Programs

- International Student Programs
- Off-Campus Study Programs
- English Language Learners Program
- Designation of Distinction in Global Engagement
- Consortium Programs: Border Studies Program and Tibetan Studies in India Program
- Global Liberal Arts Alliance Programs
- Global Scholarships and Fellowships
- Institute for Education on Japan
- Exchange Programs

Student Clubs and Organizations

- International Student Coalition
- Pura Vida Latinx
- South Asian Student Association
- Students for Free Tibet
- Vietnamese Student Association



Epic Advantage

The Epic Advantage guarantees that every student has access to a fully funded, career-discerning experience (up to \$5,000).



Faculty-Led Experiences

TIME FRAME: SUMMERS

- Research
- Community Projects



Independent Student Experiences

TIME FRAME: FALL SEMESTER, WINTER BREAK, SPRING SEMESTER, AND SUMMER

- Internships
- Field Training
- Professional Certifications

Students should visit centers.earlham.edu to set up an appointment with a career coach to learn more!